



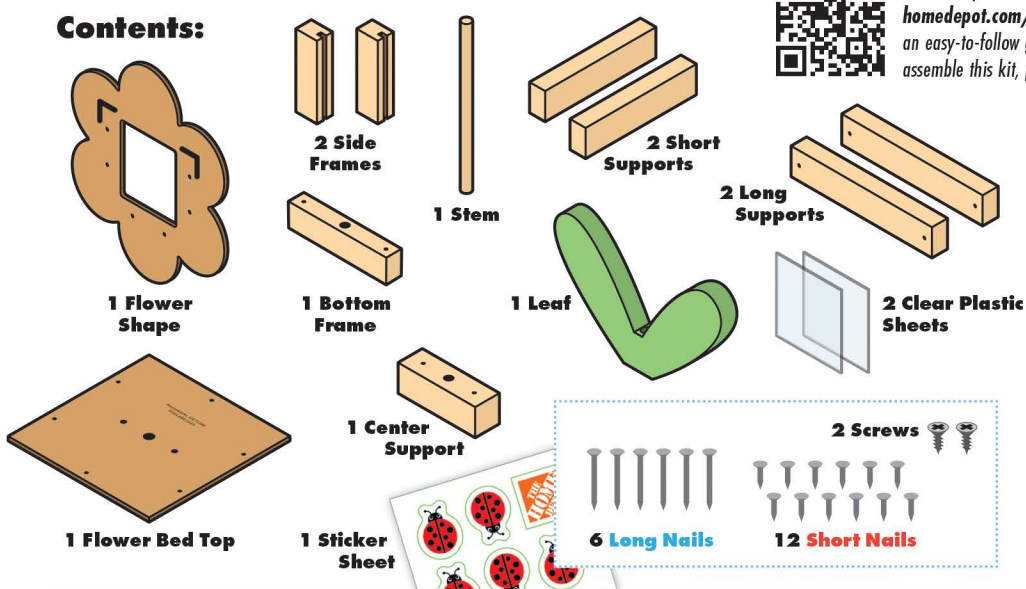
WARNING:
CHOKING HAZARD—Small Parts.
Not for children under 3 years.

The product contains functional sharp points and sharp edge. Not for children under 4 years.
Adult supervision required.

BLOOMING PICTURE FRAME

Made in Thailand exclusively for The Home Depot by Houseworks, Ltd.
2388 Pleasantdale Road, Atlanta, GA 30340 • 71180 • Thailand 1223

Contents:



Scan with your camera or visit homedepot.com/kids for an easy-to-follow guide on how to assemble this kit, plus more fun videos.



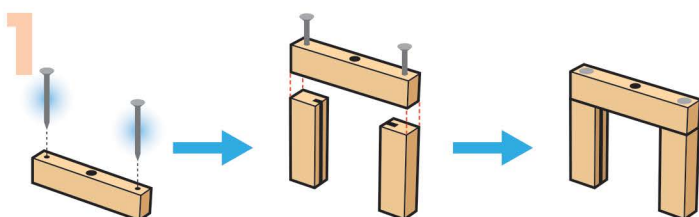
Finished example.

ALSO NEEDED:

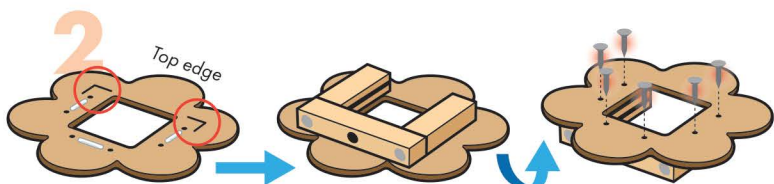
- Fine Sandpaper
- Wood Glue
- Hammer
- #2 Phillips Screwdriver

Assembly:

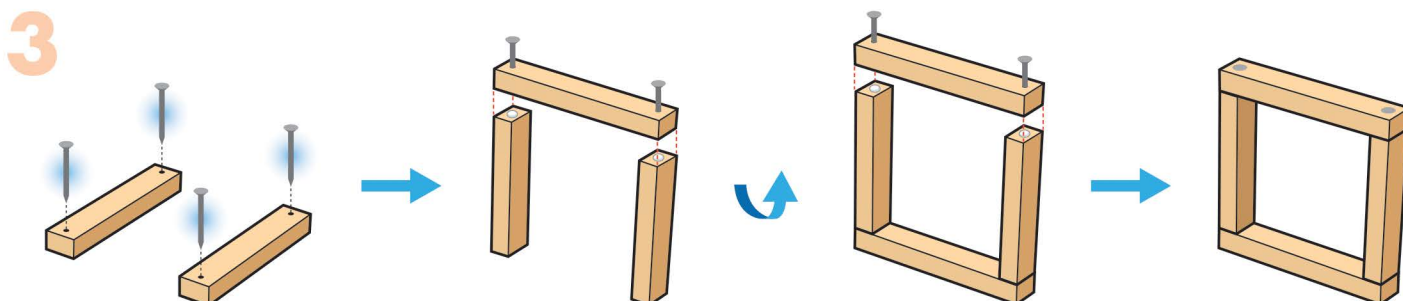
Start with sanding each wood piece to remove any rough edges. Remember to sand in the direction of the wood grain. Glue and nail the pieces together. Allow glue to completely dry.



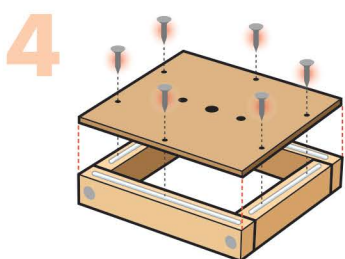
Step 1 — Place the **bottom frame** piece with 2 small nail holes and 1 big hole for the **stem** facing up. Start 2 **long nails**. Stand both **side frame** pieces up with slots facing in. Place the **bottom frame** piece on top. Make sure outside edges are even. Nail them together to form a **frame**.



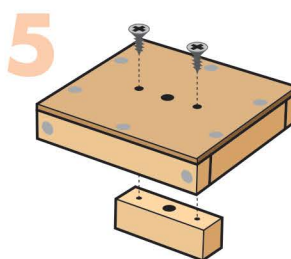
Step 2 — Lay the **flower shape** flat with marks facing up. The edge with the marks is the **top edge**. Add thin lines of glue in between the small nail holes. Using the marks as guide, place the **frame** on the **flower shape** with the open end at top. Carefully turn the project over. Using 6 **short nails**, nail the **flower shape** to the **frame** to form a **flower frame**. Set this aside for now.



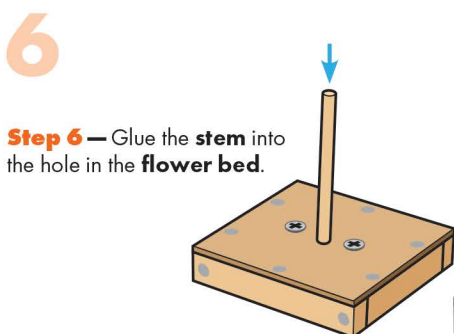
Step 3 — Lay both **long support** pieces down with holes facing up. Start 4 **long nails**. Stand both **short support** pieces up. Glue one **long support** piece on top. Make sure outside edges are even. Nail them together. Turn the project over. Repeat to attach the other **long support** piece.



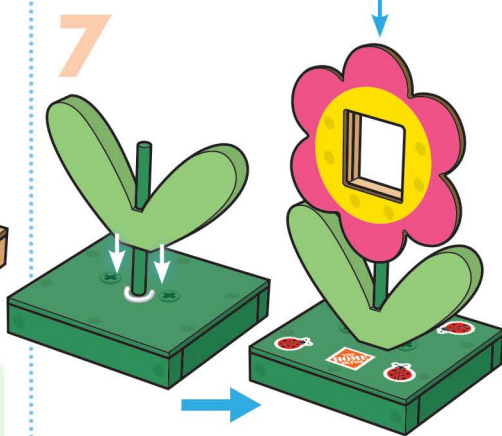
Step 4 — Lay the project down. Add a little glue to the top edge. Place the **flower bed top** piece on top. Make sure all edges are even. Using 6 **short nails**, nail them together.



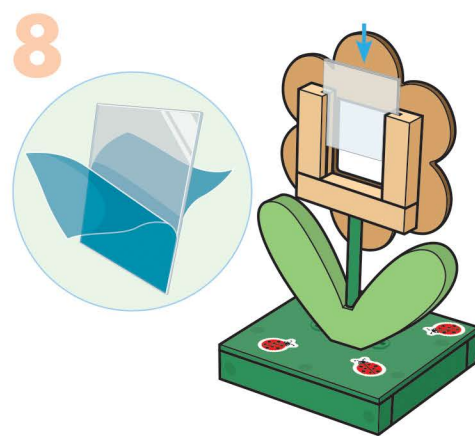
Step 5 — Place the **center support** piece with 2 small screw holes and 1 big hole for the **stem** facing up. Place the project on top and align the holes. Attach them together with 2 **screws** using a **#2 Phillips Screwdriver** to form a **flower bed**.



Step 6 — Glue the **stem** into the hole in the **flower bed**.



Step 7 — Add a little glue on top of the **flower bed** around the **stem**. Add the **leaf** to the **stem** and push it all the way down. Glue the top end of the **stem** into the hole in the bottom of the **flower frame**. Add the **stickers**.



Step 8 — Peel off blue protective sheets from BOTH sides of the **clear plastic sheets**. Slide them into the slots.

At home: Place your favorite photo (2" x 2") in between the **clear plastic sheets**.

Attention: If you are painting the project, **DO NOT paint the slots of the picture frame**. Painting the slots will make it difficult to slide the clear plastic sheets in. Let the paint dry completely before moving on to next steps.

(Ver el dorso para instrucciones en español.)