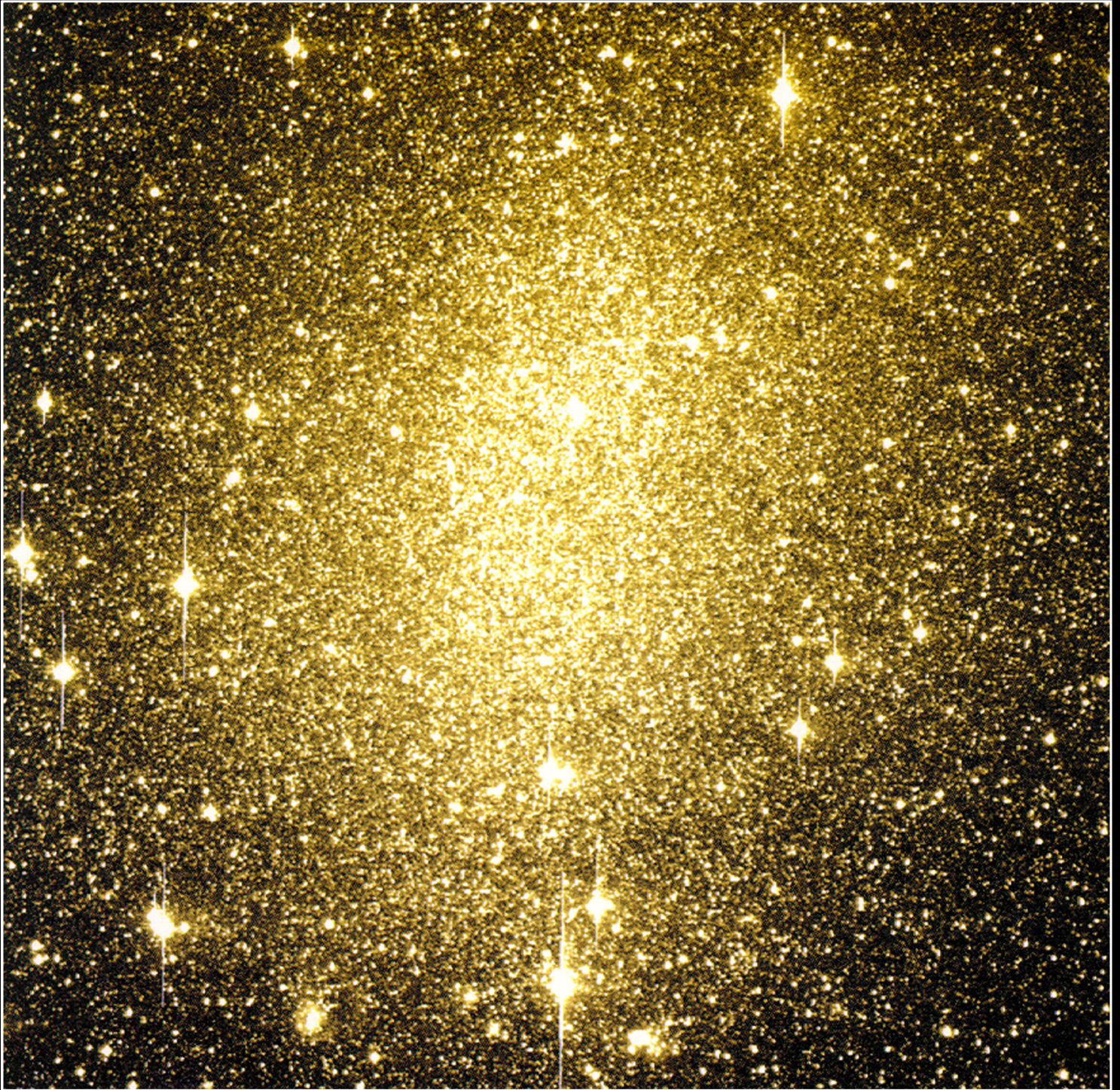


Barnard's Galaxy



Isaac Newton Telescope + Prime Focus CCD Camera



NGC 6822 or Barnard's galaxy is one of the nearest galaxies and is thus a member of the Local Group. The galaxy seems to be without symmetry and is classified as an irregular. At one end of a prominent bar a few clouds of glowing gas can be seen; at the other, bright bluish stars are scattered out into what appears to be the first signs of a straggling spiral arm. The fact that this galaxy is near enough for us to be able to resolve a large number of its individual stars makes it possible to study the star formation history based on colour-magnitude diagrams. This image was obtained using CCD imaging on the Isaac Newton Telescope. Exposure times were 1000 seconds typically.

Credit: Carme Gallart and Antonio Aparicio (IAC).

1996